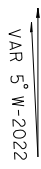
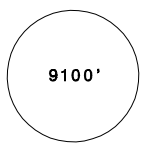
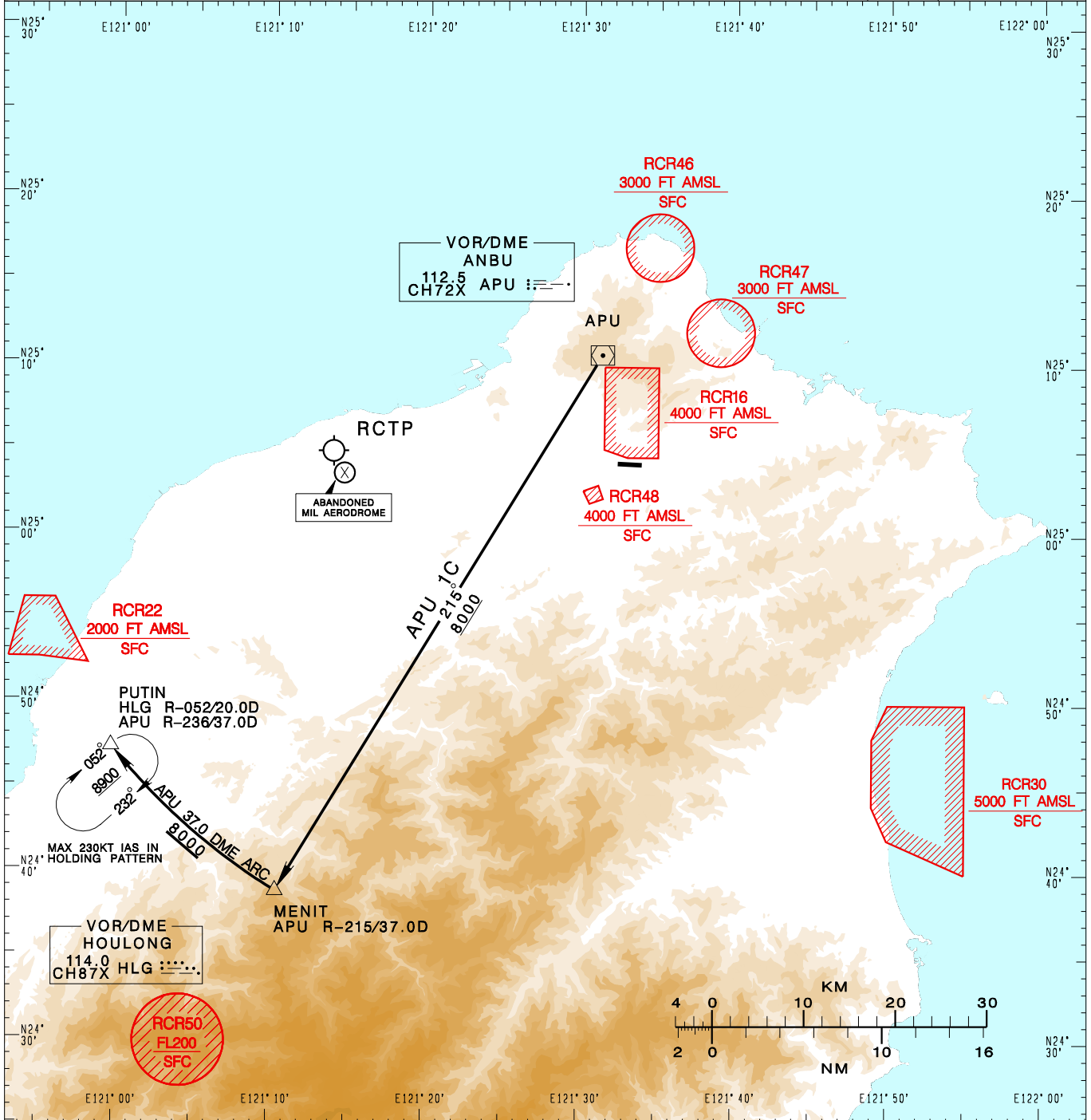


**臺北/松山機場**  
TAIPEI/SONGSHAN AD

RCSS STAR  
APU 1C(RWY 10)

TAIPEI ACC 126.7 129.1 127.9	TAIPEI APP 119.7 119.6 125.1	ATIS 127.4 341	  MSA APP 25NM	
Apt Elev: 18'		Trans Level: FL130		Trans Alt: 11,000'
BEARINGS ARE MAGNETIC; DISTANCES ARE NAUTICAL MILES; ELEVATIONS, HEIGHTS IN FEET				



CHANGES: NEW CHART

**ANBU ONE CHARLIE ARRIVAL**  
Depart APU, track APU R-215 to MENIT, then join APU 37.0 DME ARC to PUTIN.